

Kelly Hoppen

Flexibility

Kelly Hoppen reveals her interior design trends for the coming year

'Design has changed massively over the years, especially since Covid. People have become more experimental and have been more invested in changing the feel and look of their homes.

'The functions of homes are ever changing, and the chances are some

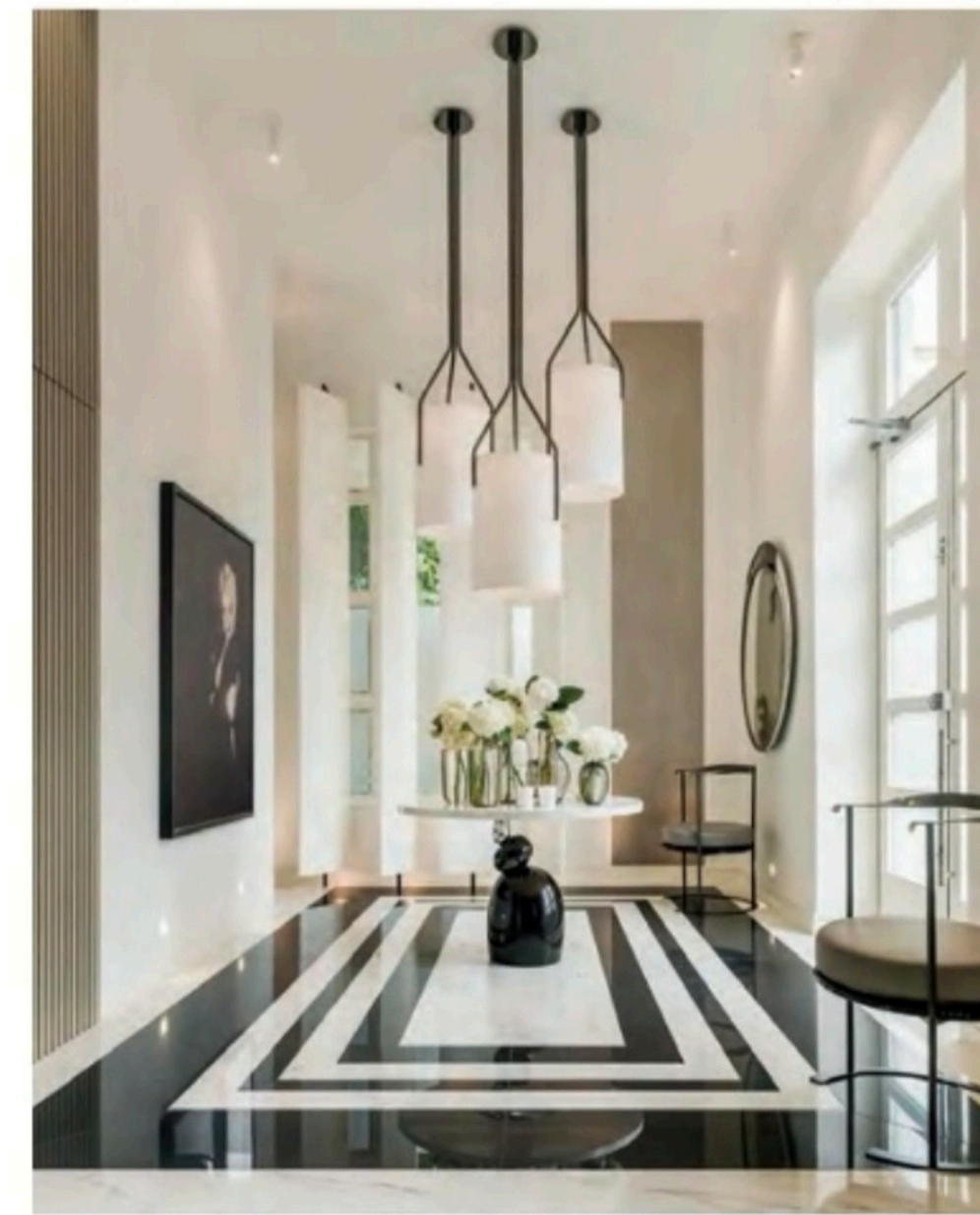
rooms need to serve more than one purpose: a spare room that doubles as a gym, or a dining area that doubles as a home office. To achieve this, it's important to plan your furniture and storage options and layouts thoroughly, following a simple, neutral colour

scheme to create different zones for different activities that seamlessly flow together. Interchangeable rooms and the abundance of textures have in fact made for incredibly luxurious interiors.

'Art has played a huge factor, with people collecting photography, →→→



Marble isn't just for kitchens and bathrooms



Create a feeling of bold glamour

art and sculptures. Reassessing your home at the beginning of the year enables you to look at objects and art that you love with fresh eyes. Black-and-white photographs hold a certain old-school glamour which looks stylish in any setting, and to display these, I would hang larger pieces on the wall with smaller ones propped up along shelves. This is a great way to create that wow factor in your home, whilst giving you the flexibility to easily move things around if necessary.

'Vintage lighting and chandeliers have had a big resurgence. Instead of crystal lighting I have seen and used more Murano-type glass and Italian designs. Lighting is one of the most important aspects of design, and a well-designed lighting scheme will elevate a home like no other element. Vintage decorative lighting such as chandeliers are great when hung in an entrance, down a staircase or over a round dining table to elevate a space and grab attention. With the endless options of theatrical lighting, you can add a sense of drama to any area in the home, whilst using hidden and more concealed lighting and other task lighting for practical needs.

'Marble is the number one hard finish, but now with powerful markings – unlike the past few years where it has been all about neutral. Marble is not just for kitchen worktops and bathroom



Marble is Hoppen's number one hard finish

flooring. One thing I love to do to achieve that wow factor in an entrance is to use black-and-white geometric marble for the flooring to create a feeling of bold glamour. Alternatively, you can use other marbles such as Arabescato or Viola with strong markings to add

touches of marble in other areas of your home, such as marble shelving that can be used to display ornaments and art. The key is to contrast the marble with concrete and more down-to-earth finishes so it's not too over the top! Visit: www.kellyhoppeninteriors.com



Use lighting to make a statement