



‘I’m so excited to share our countryside home, where I have created a space that encompasses both country and city into one, providing balance through the juxtaposition of modern style and vintage pieces’

BOHO BEAUTY

Carol Driver talks to interior designer Kelly Hoppen, former *Dragons' Den* investor, about her beautifully renovated barn in the Cotswolds

When legendary interior designer Kelly Hoppen first set eyes on her latest renovation project – a barn in the Cotswolds – it was a broken-down shell with birds flying inside.

However, it was just what the multi-award-winning designer and TV personality had been looking for – a countryside space to make her own.

The final product, a 2,500sqft converted barn, complete with a sweeping spiral staircase, is utterly breathtaking, a hybrid of modern and vintage, of countryside and city, complete with Kelly’s signature style.

Kelly, who has written 10 books and appeared as an investor on BBC’s *Dragons’ Den*, and who was made an MBE in 2009, said she is grateful to have a second home to escape the hustle and bustle of London.

“I’m so excited to share our countryside home, where I have created a space that

encompasses both country and city into one, providing balance through the juxtaposition of modern style and vintage pieces,” she says.

“I’m so grateful for the sanctuary that this home has given us over the turbulent past year, and I hope it provides inspiration and creativity for homes all over the world.”

The barn is spread across three wings that face a central courtyard. The downstairs is light and airy with high ceilings and exposed original wood beams.

In the living area, Kelly created a large multifunctional space with a central seating zone, vintage armchairs and a Willy Rizzo coffee table.

At the far end of the room is her Technogym exercise area. The focal point of the ground floor is the staircase and a view of the upstairs walkways that lead to the bedrooms.

However, it was a far cry from this when Kelly first viewed the barn just as Covid was hitting in 2020.

“When we took possession of the barn, ➔



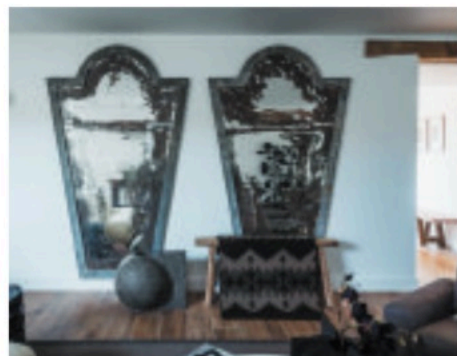
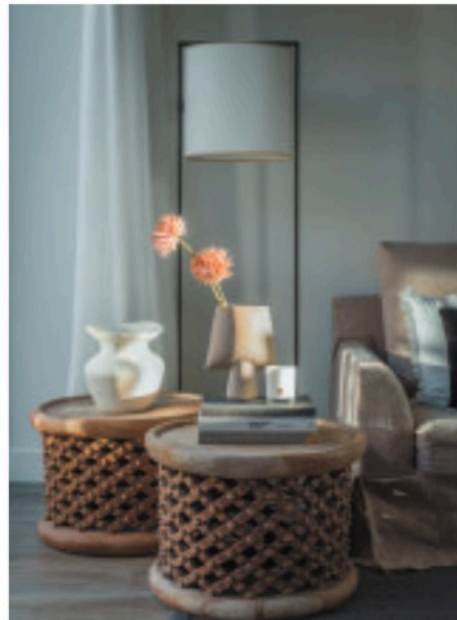


it was a broken-down shell with birds flying inside,” Kelly, who has designed the homes, yachts and jets of private clients (including Victoria and David Beckham), admits.

“It was a shell open on all sides wet and dirt, and I just made a decision then and there as I had been looking for so long and wanted a space like this in the country.

“I visualised the end product and then designed it in a day as I was so busy I didn’t have any time for myself as always. I was so busy with work that’s all I had time for but it was easy as I already had a huge amount of vintage pieces in storage so I was so happy to be able to use them.

“Designing the barn was so quick, but the execution of the design and build took longer than expected because of the pandemic as everything shut down. I wanted to keep the charm and character of the barn whilst →



encompassing a modern touch with my signature colour palette, fabrics and a mix of vintage and modern pieces but had to work with what was already ordered in some areas and I was happy with the end result.

“The space is important so unlike a normal country barn it’s open and less is more, with modern and old mixes.”

Kelly reveals that her approach to the design of the barn was influenced by the amount of time spent indoors during lockdown.

“I wanted to make sure that this space was comfortable and versatile yet stylish.

“Each room has a different feel and I designed this space to look good when lived in. It looks balanced and proportioned no matter where you sit.”

As you enter The Barn, which Kelly shares with her partner John Gardiner, you are greeted by a spacious hallway, with beautiful vaulted ceilings featuring original wooden beams.

One of the first things you notice is a white oversized statement hanging light and the spiral staircase in darker tones matching the flooring and contrasting with the white and grey palette of the space.

The elegant and cosy living space captures Kelly’s sophisticated style whilst embodying her love for neutrals and natural textures.

The spacious dining room space features

a timber table taking centre stage. A relaxing seating area is located next to the dining table and features a double-way cast iron fireplace built within a brick feature wall

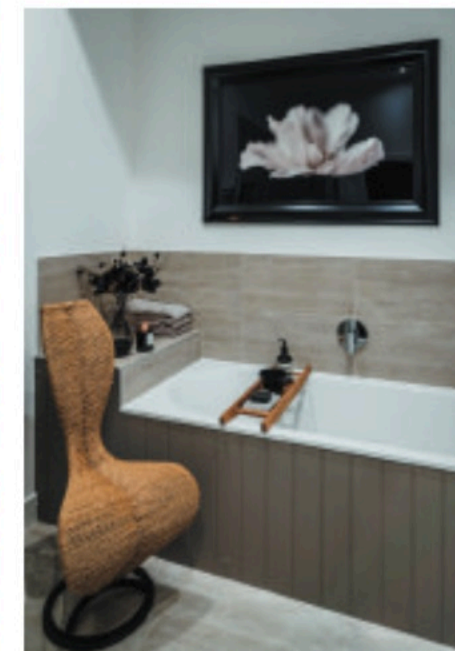
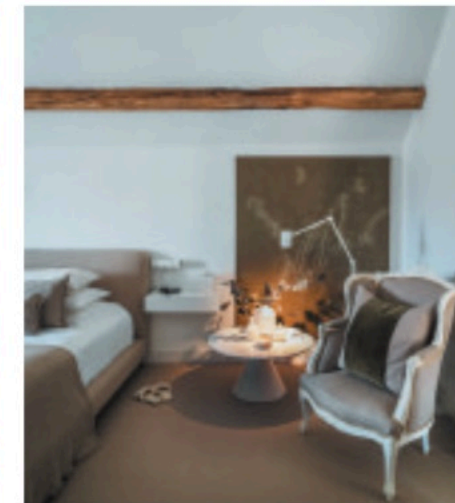
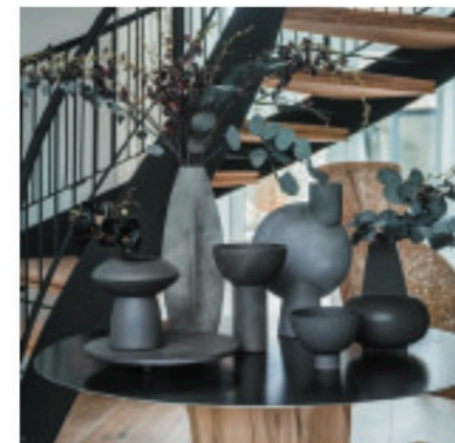
Kelly’s trademark neutral colour palette gives the kitchen a contemporary yet timeless look, utilising a range of tones to achieve depth and dynamism in the space. The heart of the home, this classic barn style kitchen looks onto the central courtyard.

“I love my kitchen and dining room, they are the heart of the home and now that I love cooking, finally I love this space. I have spent a lot of time in the kitchen since the pandemic when I began cooking and really enjoying it. It’s a very important space for me not just in how it looks but a kitchen which is practical,” Kelly admits when asked about her favourite space in the barn.

“The most unexpected favourite is the entrance barn which is a multi-functional space and works so well. Everyone has their favourite chair and mine is next to the dining room looking out into the courtyard.

“After lockdown, we slowly started hosting guests and family and it’s been just wonderful. We sometimes have them over the weekend and cook, laugh and just lounge together.

“We often have guests who come and stay over weekends. It is great as we all have such busy schedules depending on the weather we always end up outside enjoying the outdoors and fresh air, it’s just heaven. We also see many friends and family who live locally.”



Kelly admits she’s excited to see autumn and winter set in, and to start getting it ready for Christmas.

“It is such a joy to see the seasonal changes of the landscape and especially from my kitchen looking out to the courtyard,” she says.

“I love the autumnal colours and definitely get into the spirit by buying small pumpkins and seasonal vegetables and flowers which I use to add colour accents and autumn feel. It’s a wonderful season. No spooky stories yet! I love Christmas and get into the spirit of it by normally having a tree and wreaths for both our homes.”

For Kelly, since lockdown lifted, she reveals how she’s been travelling more, taking in beautiful places and breathtaking landscapes, including Mykonos, where she says she loves the food, the sea, the colours and the architecture.

Her interior design business is thriving, with upcoming projects spanning Asia, Australia, Europe, the US and the Middle East, from private homes, yachts, commercial residential buildings and hotels.

But Kelly admits she loves the balance of the city and the respite effect of her converted barn in the country.

“My country home is a second space for me to escape the hustle and bustle of London,” she says.

“I am very grateful to have this country retreat and focus when I need inspiration or some quietness to focus or take some time to relax. I love being there and instantly feel relaxed and at ease. It’s just magical in every respect.”